

3001 STAMFORD SQUARE



SITE PLAN

3001STAMFORDSQUARE.COM



FOR LEASING INFORMATION: 3001stamfordsquare.com/available.html
Ed Tonnesen, Managing Director
203 705-2262 | edward.tonnesen@am.jll.com



ROGER FERRIS +
PARTNERS LLC
ARCHITECTS

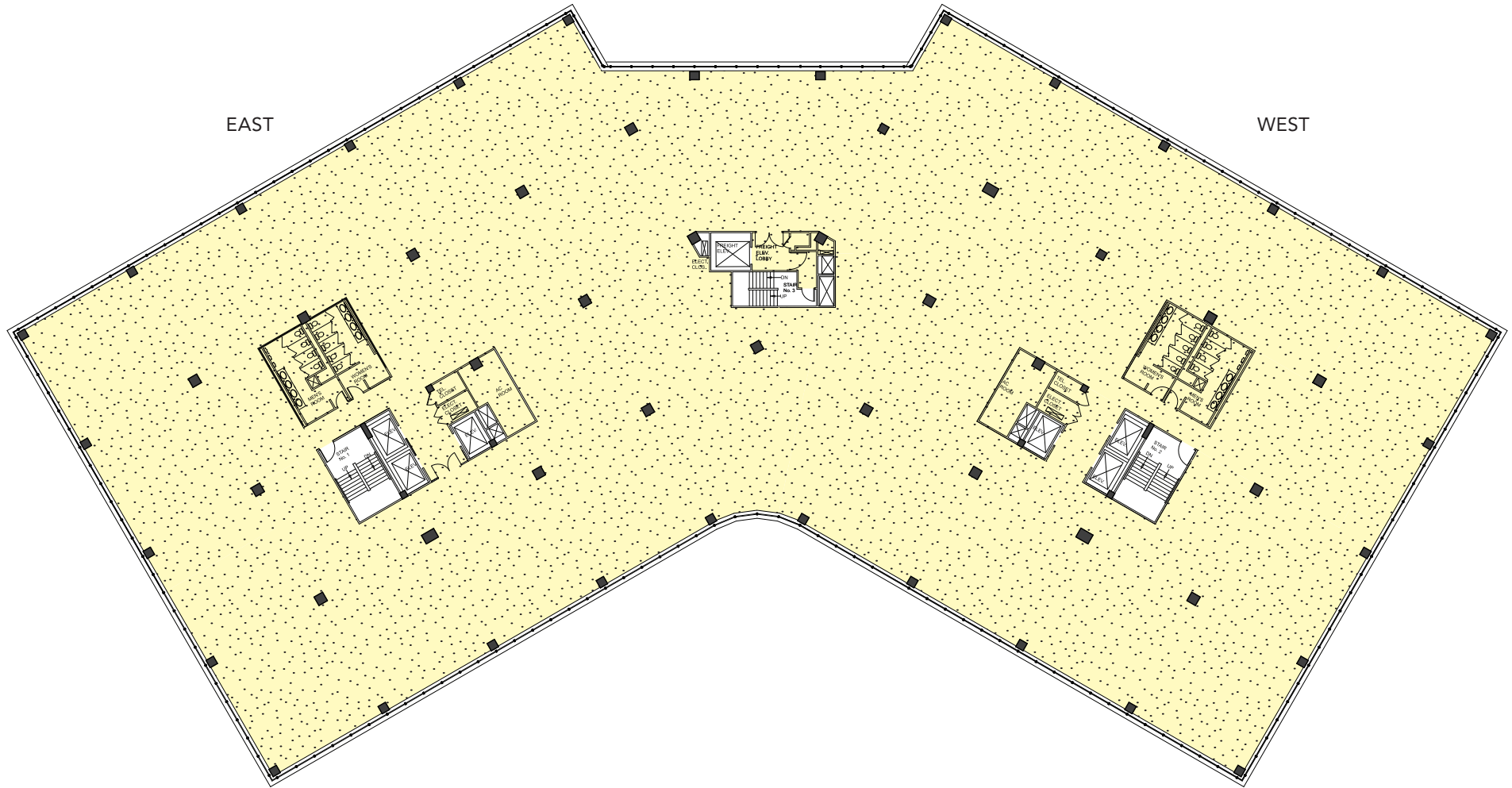


owned & managed

707 SUMMER STREET □ STAMFORD, CT 06901 □ 203 359-8500

3001

STAMFORD SQUARE



SECOND FLOOR: 44,597 SQ. FT. (SINGLE TENANT OPTION)

3001STAMFORDSQUARE.COM



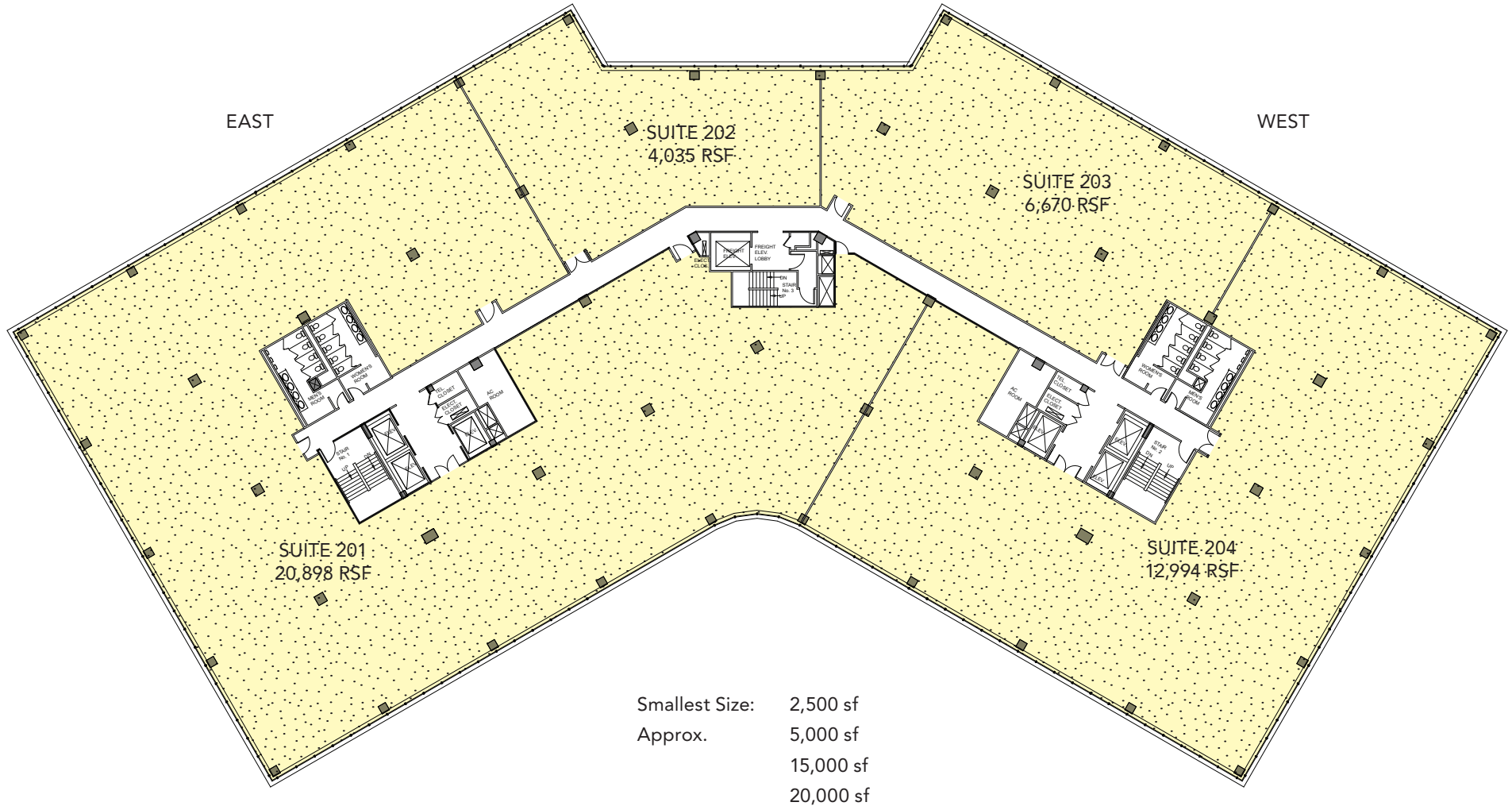
FOR LEASING INFORMATION: 3001stamfordsquare.com/available.html
Ed Tonnessen, Managing Director
203 705-2262 | edward.tonnessen@am.jll.com



owned & managed

707 SUMMER STREET □ STAMFORD, CT 06901 □ 203 359-8500

3001 STAMFORD SQUARE



SECOND FLOOR: 44,597 SQ. FT. (MULTI-TENANT TYPICAL)

3001STAMFORDSQUARE.COM



FOR LEASING INFORMATION: 3001stamfordsquare.com/available.html
 Ed Tonnessen, Managing Director
 203 705-2262 | edward.tonnessen@am.jll.com



owned & managed

707 SUMMER STREET □ STAMFORD, CT 06901 □ 203 359-8500